



MONTHLY MEMBERSHIP PROGRESS REPORT

District 5M 9

Results as of: 03/31/2018

GMT: MICHAEL MOLEND A

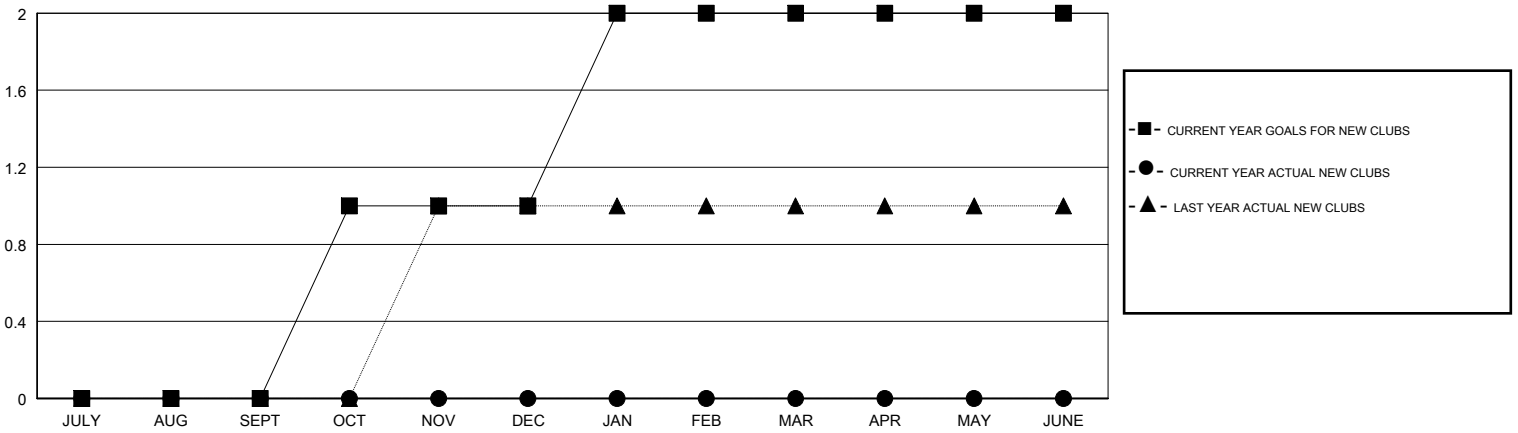
LOCATION MINNESOTA

GMT CA

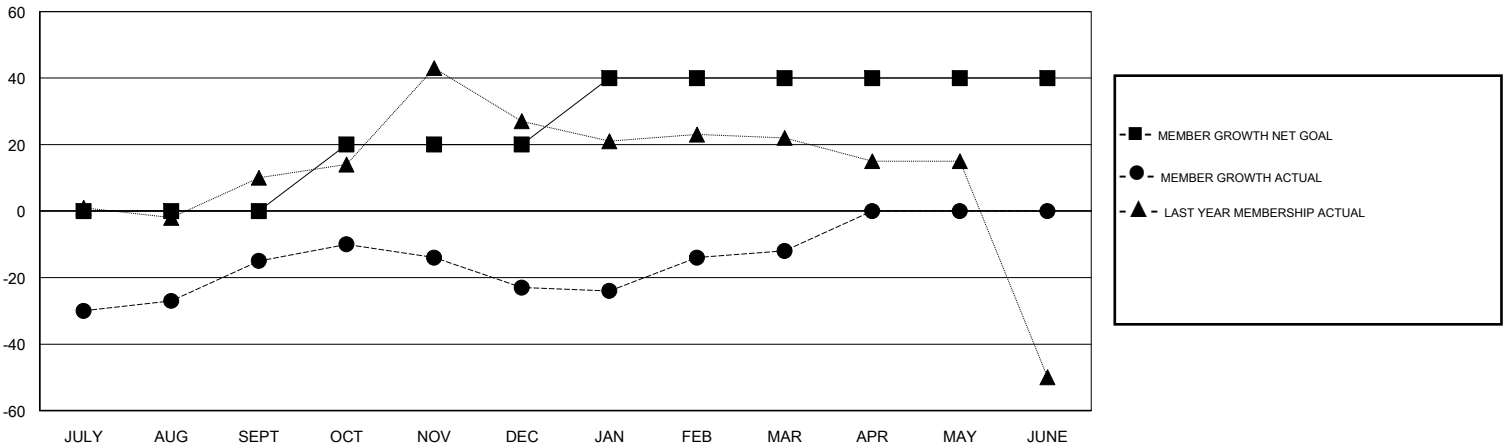
Clubs			
RESULTS FOR 2017-2018			
QUARTER	NEW CLUB GOAL	NEW CLUBS	DROPPED CLUBS
JULY/AUG/SEPT	0	0	0
OCT/NOV/DEC	1	0	0
JAN/FEB/MAR	1	0	0
APR/MAY/JUNE	0	0	0

Members			
RESULTS FOR 2017-2018			
QUARTER	MEMBER GROWTH NET GOAL	MEMBER GROWTH ACTUAL	DROPPED MEMBERS ACTUAL (including transfers)
JULY/AUG/SEPT	0	73	78
OCT/NOV/DEC	20	54	50
JAN/FEB/MAR	20	51	38
APR/MAY/JUNE	0	0	0

GOALS AND ACTUAL NEW CLUBS CUMULATIVE



GOALS AND ACTUAL MEMBERS CUMULATIVE



DROPPED CLUBS: 0	43 CLUBS OF 67 ADDED 1 OR MORE NEW MEMBERS	<u>GENDER DISTRIBUTION</u> MALE 1,434 (63.51%) FEMALE 824 (36.49%) Women Percentage Fiscal Year Goal: 38%
<u>DROPPED MEMBERS</u> DECEASED 34 CLUB CANCELLED 0 OTHER 133 TOTAL 167	CLICK HERE FOR CUMULATIVE MEMBERSHIP DATA	TOTAL FAMILY UNIT MEMBERS 731 FAMILY MEMBERS PAYING HALF DUES 368